



RAM[®] MOUNTS



About RAM Mounts

RAM® Mounts manufactures rugged and versatile mounting systems for cameras, tablets and other mobile devices that can be attached nearly anywhere. Unlike other mounts on the market, RAM® allows you to mount items where you need them most. The unique design of the RAM® Mounts system provides quick installation, adjustability, strength, vibration dampening and durability—all at a low cost. Backed by a lifetime warranty, RAM® uses powder-coated marine-grade aluminum with lightweight and high-strength composites, stainless steel hardware and rubber balls.



RAM in the Agriculture Industry

Technological innovation within the agriculture industry has taken off at an unprecedented rate in recent years. What was once a rarity is now commonplace—such as seeing four or five displays in a single cab. While it can be difficult to keep up with technological innovations, RAM® Mounts can help you build for the future.

We've worked closely alongside vehicle and display manufacturers to provide farmers with the best in-cab experience possible. It wasn't always easy to install or adjust the technology being placed in the cab, but we're proud to innovate and help farmers around the world farm more efficiently, effectively and easily.

Depend on RAM® to bring value to your operations with a wide range of mounting solutions built specifically with agriculture in mind.



Popular Mounting Locations

Tractor Cab



1,2 | Implement bar supports rail mounts including the RAM torque, RAM Tough-Claw and U-bolt mounts.

3 | Side window is able to support any RAM Twist-Lock suction cup mount (available in single, double and triple suction).

4 | Any flat surface in the tractor cab can accommodate drill-down systems, including double ball mounts or RAM Tough-Track.

5 | Mount any device to the threaded bosses of your cab pillar using the RAM Tough-Ball.

6 | Secure any RAM Twist-Lock suction cup mount to your cab windshield to support any phone, display or sun visor.

Popular Mounting Locations

Tractor Cab

1



RAM® Level Cup™ XL
Socket Arm
RAM® Torque™ Mount

4



Device Cradles and Adapters
Socket Arms
RAM® Track Ball™
RAM® Tough-Track™

2



RAM® X-Grip® Phone Mount
Socket Arm
RAM® Tough-Claw™

5



Device Adapter
Socket Arm
Threaded Ball Base

3



Device Adapter
Socket Arm
RAM® Twist-Lock™ Suction Cup

6



Sun Visor
Socket Arm
RAM® Twist-Lock™ Suction Cup

How It Works

1

Choose a Device Adapter

RAM offers a wide selection of adapters and cradles for your specific device.

2

Choose an Arm

Select an arm based on your desired length and placement.

3

Choose a Base

Select from a variety of bases to help secure your device where you need it.



Ball Size Selection Guide



B Size

- 1" diameter ball
- Holds up to 2 lbs
- Ideal for phones, cameras and cup holders



C Size

- 1.5" diameter ball
- Holds up to 4 lbs
- Ideal for tablets and small monitors



D Size

- 2.25" diameter ball
- Holds up to 6 lbs
- Ideal for display integrations

CONTENTS



ASSEMBLIES

B SIZE Page 8 - 9

C SIZE Page 10

COMPONENTS

B SIZE • Bases Page 11 - 15

• Socket Arms Page 16 - 17

• Device Adapters Page 18 - 21

C SIZE • Bases Page 22 - 26

• Socket Arms Page 27

• Device Adapters Page 28 - 33

D SIZE • Bases Page 34

• Socket Arms Page 35

• Device Adapters Page 36

ASSEMBLIES - B SIZE



**Mount Assy 5" - 4 hole AMPS
Round Plate Adaptors**
KR-RAMB101

Diameter: 1"
Weight Capacity: 0.9kg (2 lbs)
Total Length: 120.6mm



**Twist-Lock Suction Cup
Double Ball Mount**
KR-RAMB166

Diameter: 1"
Weight Capacity: 0.9kg (2 lbs)
Total Length: 170mm



**Suction Mount C/W X-Grip
Phone Holder**
KR-RAM-B-166-UN7

Ball/Socket Size: 1"
Suction Size: 3.3" Diameter
Weight Capacity: 0.9kg (2 lbs)
Width Range: 1.875"-3.25"
Depth Range: 0.875" Max



**Twist-Lock Suction Cup C/W
RAM X-Grip Phone Holder**
KR-RAPB1662UN7

Ball/Socket Size: 1"
Suction Size: 2.75" Diameter
Weight Capacity: 0.9kg (2 lbs)
Width Range: 1.875"-3.25"
Depth Range: 0.875" Max

ASSEMBLIES - B SIZE



Suction Mount C/W X-Grip Phone Holder

KR-RAMB166UN10

Ball/Socket Size: 1"

Suction Size: 3.3" Diameter

Width Range: 1.75"-4.5"

Depth Range: 0.875" Max.



Twist-Lock Suction Cup C/W Ram X-Grip Phone Holder

KR-RAPB1662UN10

Ball/Socket Size: 1"

Suction Size: 2.75" Diameter

Width Range: 1.75" - 4.5"

Depth Range: 0.875" Max



Suction Mount C/W Go-Pro Camera Mount

KR-RAM-B-166-GOP1

Suction Size: 3.3" Diameter

Socket to Socket Length: 3"

Ball/Socket Size: 1"



Twist-Lock Cup C/W B-102 & 224-1

KR-RAMB1022241U

Ball/Socket Size: 1"

Suction Size: 3.3" Diameter

Weight Capacity: 0.9kg (2 lbs)

ASSEMBLIES - C SIZE



Mount C/W 2 RAM-202 & Arm

KR-RAMC101

Diameter: 1.5"

Weight Capacity: 1.8kg (4 lbs)

Total Length: 187mm



Twist-Lock Triple Suction Cup Mount C/W Round Plate

KR-RAP365101U

Diameter: 1.5"

Weight Capacity: 1.8kg (4 lbs)

Total Length: 170mm



COMPONENTS - B SIZE BASES



Twist-Lock Single Suction Cup Base

KR-RAMB2241U

Ball/Socket Size: 1"

Suction Size: 3.3" Diameter

Weight Capacity: 0.9kg (2 lbs)



4" Diameter Suction Cup Base

KR-RAMB224U

Ball/Socket Size: 1"

Suction Size: 4" Diameter

Weight Capacity: 0.9kg (2 lbs)



Twist-Lock Double Suction Cup Base (No Ball)

KR-RAMB189B

Suction Size: 3.3" Diameter

Hole Pattern: 4-Hole AMPS: 1.181" x 1.496"

Total Length: 202.9mm



Twist-Lock Double Suction Cup Base

KR-RAMB189B202U

Ball/Socket Size: 1"

Suction Size: 3.3" Diameter Bases;
Total Width: 7.95"

Weight Capacity: 0.9kg (2 lbs)

COMPONENTS - B SIZE BASES



**Portable Friction Dashboard
Base for Suction Cups**
MI-RAP-279C

Base Diameter: 6.5" Diameter
Suction Platform: 3.5" Diameter
Weight Capacity: 0.9kg (2 lbs)
Dimensions: 6.5"W x 1.25"H x 6.5" D



**3.5" Adhesive Dashboard
Base for Suction Cups**
MI-RAP-350-35B

Material: High Strength Composite
Included: 1 x 3" Double Adhesive
Pad, 1 x Alcohol Prep Pad



**2 Hole AMPS Diamond Plate
Adapter**
KR-RAMB238

Hole Pattern: 2-Hole AMPS: 1.912"
Plate Size: 2.43" x 1.31"
Ball/Socket Size: 1"
Weight Capacity: 0.9kg (2 lbs)



**4 Hole AMPS Round Plate
Adapter**
KR-RAMB202

Hole Pattern: 4 Hole AMPS, 3 Hole
120-Degree
Plate Size: 2.5" Diameter
Ball/Socket Size: 1"
Weight Capacity: 0.9kg (2 lbs)

COMPONENTS - B SIZE BASES



4 Hole AMPS Rectangular Plate Adapter

KR-RAMB347U

Hole Pattern: 4-Hole AMPS

Plate Size: 2" x 1.7"

Ball/Socket Size: 1"

Weight Capacity: 0.9kg (2 lbs)



11mm Bolt Head Adapter Mounting Bracket

KR-RAMB252U

Ball/Socket Size: 1"

Weight Capacity: 0.9kg (2 lbs)

Material: Marine-Grade Aluminum



9mm Angled Bolt Head Adapter Ball Base

KR-RAMB272

Ball/Socket Size: 1"

Weight Capacity: 0.9kg (2 lbs)

Material: Marine-Grade Aluminum



0.5" to 1" Diameter Single U-Bolt Base

KR-RAMB231

Ball/Socket Size: 1"

Clamp Range: 0.5" - 1" Diameter

Weight Capacity: 0.9kg (2 lbs)

Material: Marine-Grade Aluminum

COMPONENTS - B SIZE BASES



0.5" to 1.25" Diameter Single U-Bolt Base

KR-RAMB231Z

Ball/Socket Size: 1"

Clamp Range: 0.5" - 1.25" Diameter

Weight Capacity: 0.9kg (2 lbs)



0.75" to 1.25" Diameter Double U-Bolt Base

KR-RAMB235U

Ball/Socket Size: 1"

Clamp Range: 1" - 1.25" Diameter

Weight Capacity: 0.9kg (2 lbs)



0.75" to 1" Diameter RAM Torque Base

KR-RAMB408751U

Ball/Socket Size: 1"

Clamp Range: 0.75" - 1" Diameter

Weight Capacity: 0.9kg (2 lbs)



1.125" to 1.5" Diameter RAM Torque Base

KR-RAMB40811215U

Ball/Socket Size: 1"

Clamp Range: 1.125" - 1.5" Diameter

Weight Capacity: 0.9kg (2 lbs)

COMPONENTS - B SIZE BASES



**0.625" to 1.14" Diameter RAM
Tough-Claw Base
KR-RAPB400**

Ball/Socket Size: 1"
Clamp Range: 0.625" - 1.14" Diameter
Weight Capacity: 0.9kg (2 lbs)



**1" to 1.875" Diameter RAM
Tough-Claw Base
KR-RAMB404P**

Ball/Socket Size: 1"
Clamp Range: 1" - 1.875" Diameter
Weight Capacity: 0.9kg (2 lbs)



**1" to 2.25" Diameter RAM
Tough-Claw Base
MI-RAP-B-401**

Ball/Socket Size: 1"
Clamp Range: 1" - 2.25" Diameter
Weight Capacity: 0.9kg (2 lbs)



**RAM Motorcycle Handlebar
Clamp Base with M8 Bolts
KR-RAMB367**

Ball/Socket Size: 1"
Weight Capacity: 0.9kg (2 lbs)
Material: Marine-Grade Aluminum

COMPONENTS - B SIZE

SOCKET ARMS



2.42" (60mm) Short Socket

KR-RAMB201A

Ball/Socket Size: 1"

Total Length: 50mm

Weight Capacity: 0.9kg (2 lbs)



3.73" (95mm) Medium Socket Arm

KR-RAMB201B

Ball/Socket Size: 1"

Total Length: 95mm

Weight Capacity: 0.9kg (2 lbs)



6" (150mm) Long Socket Arm

KR-RAMB201C

Ball/Socket Size: 1"

Total Length: 150mm

Weight Capacity: 0.9kg (2 lbs)



COMPONENTS - B SIZE

SOCKET ARMS



RAM Double Socket Swivel Arm

MI-RAP-B-200-12U

Ball/Socket Size: 1"

Overall Length: 3.69"

Weight Capacity: 0.9kg (2 lbs)



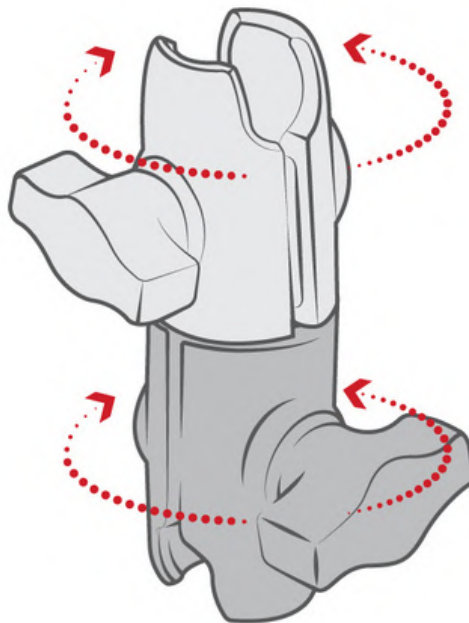
RAM B Size to C Size Socket Arm

MI-RAP-BC-201U

Ball/Socket Size: 1" & 1.5"

Weight Capacity: 0.9kg (2 lbs)

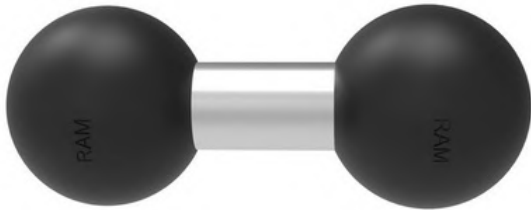
Material: High Strength Composite



Highly **Adjustable**

COMPONENTS - B SIZE

DEVICE ADAPTERS



RAM Double Ball Adapter

KR-RAMB230

Ball/Socket Size: 1"

Socket to Socket Length: 1.75"

Weight Capacity: 0.9kg (2 lbs)

Overall Length: 2.54"



RAM Universal Mounting Plate 2" x 6.25"

KR-RAMB111B

Ball/Socket Size: 1"

Plate Size: 6.25" x 2"

Weight Capacity: 0.9kg (2 lbs)



2 Hole AMPS Diamond Plate Adapter

KR-RAMB238

Ball/Socket Size: 1"

Plate Size: 2.43" x 1.31"

Hole Pattern: 2-Hole AMPS: 1.912"

Weight Capacity: 0.9kg (2 lbs)



4 Hole AMPS Round Plate Adapter

KR-RAMB202

Ball/Socket Size: 1"

Plate Size: 2.5" Diameter

Hole Pattern: 4-Hole AMPS: 1.181", 3-

Hole 120-Degree: 1.812" Diameter

COMPONENTS - B SIZE

DEVICE ADAPTERS



4 Hole AMPS Rectangular Plate Adapter

KR-RAMB347U

Ball/Socket Size: 1"

Plate Size: 2" x 1.7"

Thread Pitch: 1/4" - 20



1/4"-20 Thread Camera Adapter with Round Plate

MI-RAM-B-202AU

Ball/Socket Size: 1"

Plate Size: 2.5" Diameter

Thread Pitch: 1/4"-20 x 0.25"



RAM Ball Adapter C/W 1/4"-20 Female Threaded Hole

KR-RAMB337

Ball/Socket Size: 1"

Thread Pitch: 1/4"-20 x 5/8" (female)

Weight Capacity: 0.9kg (2 lbs)



RAM Ball Adapter with 1/4"-20 Threaded Post

KR-RAMB237

Ball/Socket Size: 1"

Thread Pitch: 1/4"-20 x 0.25"

Weight Capacity: 0.9kg (2 lbs)

COMPONENTS - B SIZE

DEVICE ADAPTERS



**RAM Ball Adapter M10 x 1.5
Threaded Post**
KR-RAMB3491

Ball/Socket Size: 1"
Weight Capacity: 0.9kg (2 lbs)
Material: Marine-Grade Aluminum



**RAM Tough-Ball M6-1 x
6mm Threaded Stud**
KR-RAPB379M616

Ball/Socket Size: 1"
Weight Capacity: 0.9kg (2 lbs)



**RAM X-Grip Holder for Phones
up to 3.25\"**
KR-RAMBHOLUN7

Ball/Socket Size: 1"
Weight Capacity: 0.9kg (2 lbs)
Width Range: 1.875\" - 3.25"



**RAM X-Grip Holder for
Phones up to 4.5\"**
KR-RAMHOLUN10BU

Ball/Socket Size: 1"
Weight Capacity: 0.9kg (2 lbs)
Width Range: 1.75\" - 4.5"

COMPONENTS - B SIZE

DEVICE ADAPTERS



RAM X-Grip Holder for 7"-8" Tablets

KR-RAMBHOLUN8

Ball/Socket Size: 1"

Weight Capacity: 0.9kg (2 lbs)



RAM Tab-Tite Holder for 9"-10.5" Tablets with H/D Cases

MI-RAM-HOL-TAB20U

Height Range: 9.5" - 12.125"

Width Range: 6.55" - 7.43"

Depth Range: 0.3" - 0.875"



RAM Level Cup 160Z Drink Holder

KR-RAMB132B

Ball/Socket Size: 1"

Drink Size: 12-16 oz

Weight Capacity: 0.9kg (2 lbs)



RAM Drop-N-Lock Universal Scanner Gun Holder

MI-RAP-317U

Hole Pattern: 2-Hole AMPS: 1.912"

Inside Width: 1.45"

Inside Length: 3.3"

Inside Depth: 6.5"

COMPONENTS - C SIZE BASES



RAM Triple Twist Suction Cup Base C/W 1.5" Ball

KR-RAM2243U

Ball/Socket Size: 1.5"

Suction Size: 3 x 3.3" Diameter Bases

Weight Capacity: 1.8kg (4 lbs)



RAM Twist-Lock Triple Suction Cup Ball Base

KR-RAMC365224

Ball/Socket Size: 1.5"

Total Length: 202mm

Weight Capacity: 1.8kg (4 lbs)



RAM Triple Suction Cup Base W/O Ball

KR-RAP3652241BU

Suction Size: 3 x 3.3" Diameter Bases

Hole Pattern: 4-Hole AMPS: 1.181" x 1.496"

Material: High Strength Composite



RAM Portable Friction Dashboard Base for Suction Cups

MI-RAP-279C

Base Diameter: 6.5" Diameter

Suction Platform: 3.5" Diameter

Weight: 0.9kg (2 lbs)

COMPONENTS - C SIZE BASES



2 Hole AMPS Round Plate Adapter

KR-RAMC238

Ball/Socket Size: 1.5"

Total Length: 61.7mm

Weight Capacity: 1.8kg (4 lbs)



4 Hole AMPS Round Plate Adapter

KR-RAMC202

Ball/Socket Size: 1.5"

Total Length: 62mm

Weight Capacity: 1.8kg (4 lbs)



4 Hole AMPS Rectangular Plate Adapter

KR-RAM347U

Ball/Socket Size: 1.5"

Plate Size: 1.69" x 2"

Hole Pattern: 4-Hole AMPS: 1.181" x 1.496"



4 Hole Square Plate Adapter 1.5" x 1.5"

KR-RAMC202U22

Ball/Socket Size: 1.5"

Total Length: 50.8mm

Weight Capacity: 1.8kg (4 lbs)

COMPONENTS - C SIZE BASES



RAM Ball Base 1.5" x 2" 4-Hole Pattern

KR-RAMC202U225

Ball/Socket Size: 1.5"

Total Length: 63.5mm

Weight Capacity: 1.8kg (4 lbs)



RAM Ball Base 1.5" x 4.5" 4-Hole Pattern

KR-RAMC202U25

Ball/Socket Size: 1.5"

Total Length: 127mm

Weight Capacity: 1.8kg (4 lbs)



RAM Mounting Plate 6.25" x 2"

KR-RAMC111B

Ball/Socket Size: 1.5"

Total Length: 158.8mm

Weight Capacity: 1.8kg (4 lbs)



RAM 0.5" to 1" Diameter U-Bolt Base

KR-RAMC231

Ball/Socket Size: 1.5"

Weight Capacity: 1.8kg (4 lbs)

COMPONENTS - C SIZE BASES



RAM 0.75" to 1.25" Diameter U-Bolt Base

KR-RAMC235

Ball/Socket Size: 1.5"

Total Length: 81.2mm

Weight Capacity: 1.8kg (4 lbs)



RAM 1.25" to 1.5" Diameter U-Bolt Base

KR-RAM2351U

Ball/Socket Size: 1.5"

Clamp Range: 1.25" - 1.5" Diameter

Weight Capacity: 1.8kg (4 lbs)



RAM 0.75" to 1" Diameter RAM Torque Base

KR-RAM408751U

Ball/Socket Size: 1.5"

Clamp Range: 0.75" - 1" Diameter

Weight Capacity: 1.8kg (4 lbs)



RAM 1.125" to 1.5" Diameter RAM Torque Base

KR-RAM40811215U

Ball/Socket Size: 1.5"

Clamp Range: 1.125" - 1.5" Diameter

Weight Capacity: 1.8kg (4 lbs)

COMPONENTS - C SIZE BASES



**RAM 0.625" to 1.5" Diameter
Tough-Claw Base**
KR-RAP400

Ball/Socket Size: 1.5"
Clamp Range: 0.625" - 1.14" Diameter
Weight Capacity: 1.8kg (4 lbs)



**RAM 1" to 1.6" Diameter
Tough-Claw Base**
KR-RAP404U

Ball/Socket Size: 1.5"
Clamp Range: 1" - 1.6" Diameter
Weight Capacity: 1.8kg (4 lbs)



**RAM 1" to 2.25" Diameter
Tough-Claw Base**
KR-RAMC401P

Ball/Socket Size: 1.5"
Clamp Range: 25-57mm
Total Length: 166.6mm
Weight Capacity: 1.8kg (4 lbs)



**RAM Single Socket Arm with
Round Plate**
KR-RAPC2001293U

Hole Pattern: 4-Hole AMPS: 1.181" x
1.496"
Rotation: 360-degree
Weight Capacity: 1.8kg (4 lbs)

COMPONENTS - C SIZE

SOCKET ARMS



3.56" (90mm) Short Socket Arm

KR-RAMC201B

Ball/Socket Size: 1.5"

Total Length: 90mm

Weight Capacity: 1.8kg (4 lbs)



5.69" (145mm) Medium Socket Arm

KR-RAMC201

Ball/Socket Size: 1.5"

Total Length: 145mm

Weight Capacity: 1.8kg (4 lbs)



9.13" (235mm) Long Socket Arm

KR-RAMC201D

Ball/Socket Size: 1.5"

Total Length: 235mm

Weight Capacity: 1.8kg (4 lbs)



RAM B Size to C Size Socket Socket Arm

MI-RAP-BC-201U

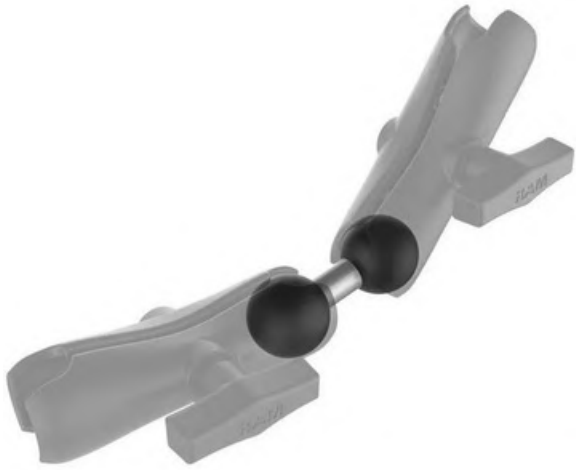
Ball/Socket Size: 1" - 1.5"

Weight Capacity: 0.9kg (2 lbs)

Material: High Strength Composite

COMPONENTS - C SIZE

DEVICE ADAPTERS



RAM Double Ball Adapter
KR-RAMC230

Ball/Socket Size: 1.5"
Total Length: 57mm
Weight Capacity: 1.8kg (4 lbs)



RAM Triple Ball Adapter
KR-RAM289U

Ball/Socket Size: 1.5"
Weight Capacity: 1.8kg (4 lbs)
Material: Marine-Grade Aluminum



2 Hole AMPS Diamond Plate Adapter
KR-RAMC238

Ball/Socket Size: 1.5"
Total Length: 61.7mm
Weight Capacity: 1.8kg (4 lbs)



4 Hole AMPS Round Plate Adapter
KR-RAMC202

Ball/Socket Size: 1.5"
Total Length: 62mm
Weight Capacity: 1.8kg (4 lbs)

COMPONENTS - C SIZE

DEVICE ADAPTERS



**RAM 4 Hole AMPS
Rectangular Plate Adapter**
KR-RAM347U

Ball/Socket Size: 1.5"
Plate Size: 1.69" x 2"
Weight Capacity: 1.8kg (4 lbs)



**RAM 75 x 75mm VESA Fixing
Plate**
KR-RAMC2461

Ball/Socket Size: 1.5"
Total Length: 75mm
Weight Capacity: 1.8kg (4 lbs)



**RAM 100 x 100mm VESA
Plate with Ball**
KR-RAMC246U

Ball/Socket Size: 1.5"
Total Length: 120.7mm
Weight Capacity: 1.8kg (4 lbs)



**RAM Mounting Plate 4.25"
x 3.81"**
KR-RAMC107B

Ball/Socket Size: 1" - 1.5"
Weight Capacity: 1.8kg (4 lbs)

COMPONENTS - C SIZE

DEVICE ADAPTERS



RAM Mounting Plate 6.25" x 2"

KR-RAMC111B

Ball/Socket Size: 1.5"

Total Length: 158.8mm

Weight Capacity: 1.8kg (4 lbs)



RAM Adapter Round Plate

1/4"-20 Threaded Stud

KR-RAMC202A

Ball/Socket Size: 1.5"

Weight Capacity: 1.8kg (4 lbs)



**3/8"-16 Thread Camera
Adapter with Round Plate**

MI-RAM-202CU

Ball/Socket Size: 1.5"

Weight Capacity: 1.8kg (4 lbs)

Hole Pattern: 4-Hole AMPS: 1.181" x 1.496"

3-Hole 120 Degree: 1.812" Diameter



**RAM Ball Adapter 1/4"-20
Female Threaded Hole**

KR-RAMC337

Ball/Socket Size: 1" - 1.5"

Weight Capacity: 1.8kg (4 lbs)

COMPONENTS - C SIZE

DEVICE ADAPTERS



RAM Ball Adapter for John Deere

KR-RAM-270U

Ball/Socket Size: 1.5"

Weight Capacity: 1.8kg (4 lbs)

Material: Marine-Grade Aluminum



RAM Tough-Ball M10-1.5 x 25mm Threaded Stud

KR-RAP-379U-M101525

Ball/Socket Size: 1.5"

Thread Pitch: M10-1.5 x 25mm

Weight Capacity: 1.8kg (4 lbs)



RAM Tough-Ball M12-1.75 x 12mm Threaded Stud

KR-RAP379UM1217512

Ball/Socket Size: 1.5"

Thread Pitch: M12-1.75 x 12mm

Weight Capacity: 1.8kg (4 lbs)



RAM X-Grip Holder for Phones up to 4.5" Wide

KR-RAM-HOL-UN10BCU

Ball/Socket Size: 1.5"

Width Range: 1.75" - 4.5"

Depth Range: 0.875" Max

Weight Capacity: 1.8kg (4 lbs)

COMPONENTS - C SIZE

DEVICE ADAPTERS



RAM X-Grip Holder for 7" - 8" Tablets

MI-RAM-HOL-UN8BCU

Ball/Socket Size: 1.5"

Total Length: 90mm

Weight Capacity: 1.8kg (4 lbs)



RAM X-Grip Holder for 9" - 10" Tablets

KR-RAMHOLUN9

Max Height: 10.25"

Width Range: 6.25" - 8.10"

Max Depth: 0.875"



RAM X-Grip Holder for 11" - 12" Tablets

KR-RAMHOLUN11

Max Height: 10.25"

Width Range: 7.25" - 8.75"

Max Depth: 0.875"



RAM Tab-Tite Holder for 9"-10.5" Tablets with H/D Cases

MI-RAM-HOL-TAB20U

Height Range: 9.5" - 12.125"

Width Range: 6.55" - 7.43"

Depth Range: 0.3" - 0.875"

COMPONENTS - C SIZE DEVICE ADAPTERS



The MI-RAP-317U has an internal spring-loaded lever that holds the scanner gun in place, so even when mounted upside down or sideways, the scanner gun will remain secured inside the holder. To release simply lift up on the tab and the scanner gun comes right out.



The MI-RAP-317U has an open slot that lets you route a cable that may be connected to your scanner gun.



RAM Drop-N-Lock Universal Scanner Gun Holder MI-RAP-317U

Hole Pattern: 2-Hole AMPS: 1.912"
Inside Width: 1.45"
Inside Length: 3.3"
Inside Depth: 6.5"



COMPONENTS - D SIZE BASES



RAM Large Round Plate with Ball

KR-RAMD202U

Ball/Socket Size: 2.25"
Plate Size: 3.68" Diameter
Weight Capacity: 2.7kg (6 lbs)



RAM Ball Base 1.5" x 2.5" 4-Hole Pattern

KR-RAMD202U23

Ball/Socket Size: 2.25"
Plate Size: 2" x 3"
Weight Capacity: 2.7kg (6 lbs)



RAM Ball Base 1.5" x 3.5" 4-Hole Pattern

KR-RAMD202U24

Ball/Socket Size: 2.25"
Plate Size: 2" x 4"
Weight Capacity: 2.7kg (6 lbs)



COMPONENTS - D SIZE

SOCKET ARMS



**RAM Double Socket Arm Short
130mm**

KR-RAMD201UC

Ball/Socket Size: 2.25"

Socket to Socket Length: 3.6"

Weight Capacity: 2.7kg (6 lbs)



**RAM Double Socket Arm
Medium 215mm**

KR-RAMD201D

Ball/Socket Size: 2.25"

Total Length: 215mm

Weight Capacity: 2.7kg (6 lbs)



COMPONENTS - D SIZE DEVICE ADAPTERS



RAM Large Round Plate with Ball

KR-RAMD202U

Ball/Socket Size: 2.25"

Plate Size: 3.68" Diameter

Weight Capacity: 2.7 kg (6 lbs)



RAM 100 x 100mm VESA Plate with Ball

KR-RAMD246U

Ball/Socket Size: 2.25"

Weight Capacity: 2.7kg (6 lbs)





RAM
MOUNTS



KRAMP